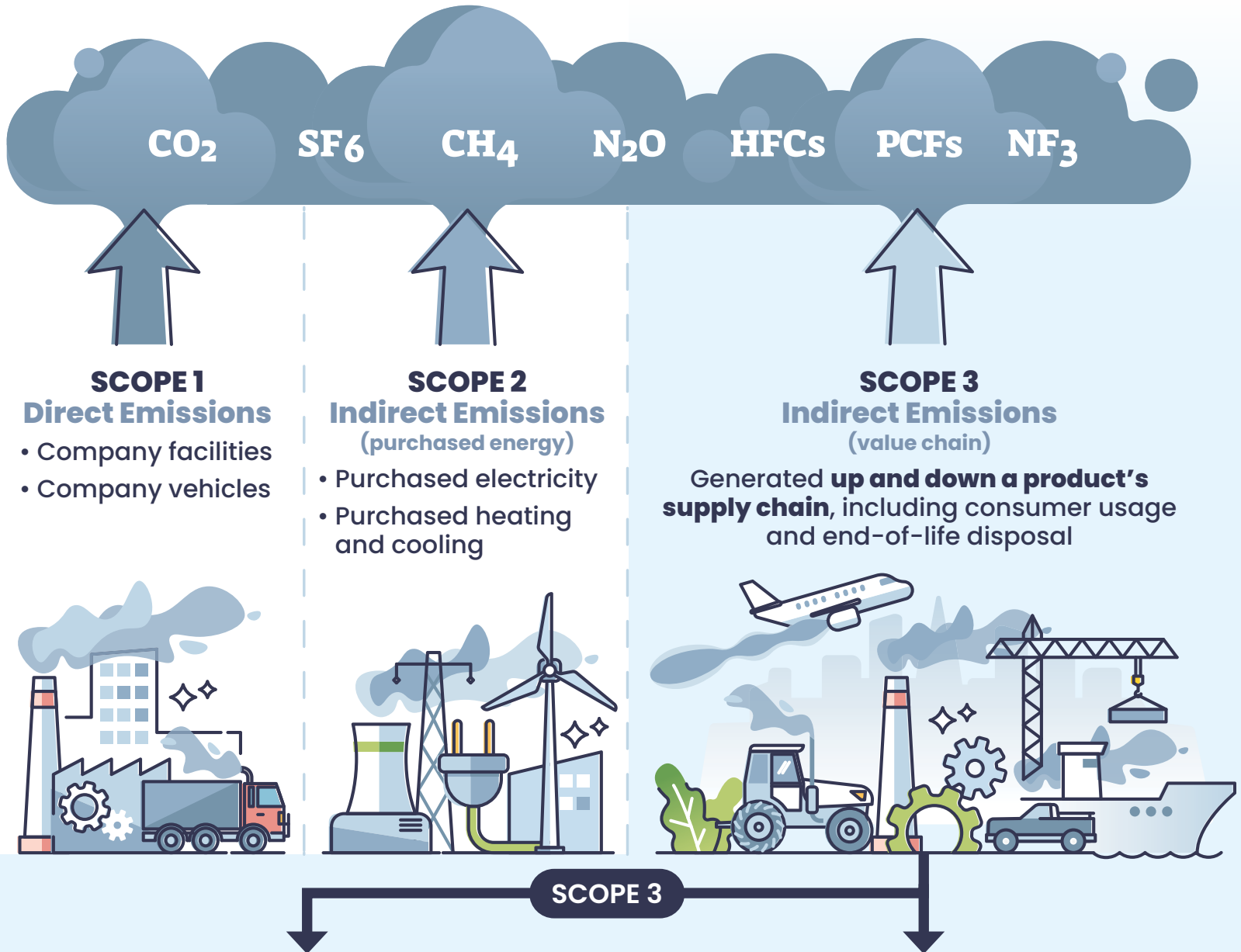


Scope 1, 2 & 3

GREENHOUSE GAS EMISSIONS EXPLAINED



GENERATED "UPSTREAM" IN THE VALUE CHAIN

- Purchased goods and services
 - Capital goods
- Fuel- and energy-related activities
- Transportation and distribution
- Waste generated in operations
 - Business travel
- Employee commuting
- Leased assets

GENERATED "DOWNSTREAM" IN THE VALUE CHAIN

- Transportation and distribution
- Processing of sold products
 - Use of sold products
- End-of-life treatment of sold products
 - Leased assets
 - Franchises
 - Investments